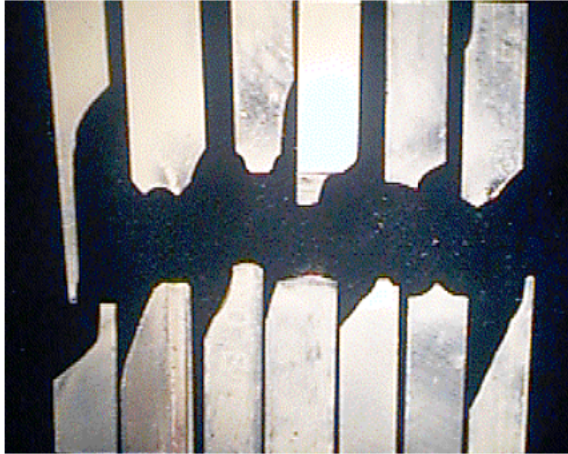
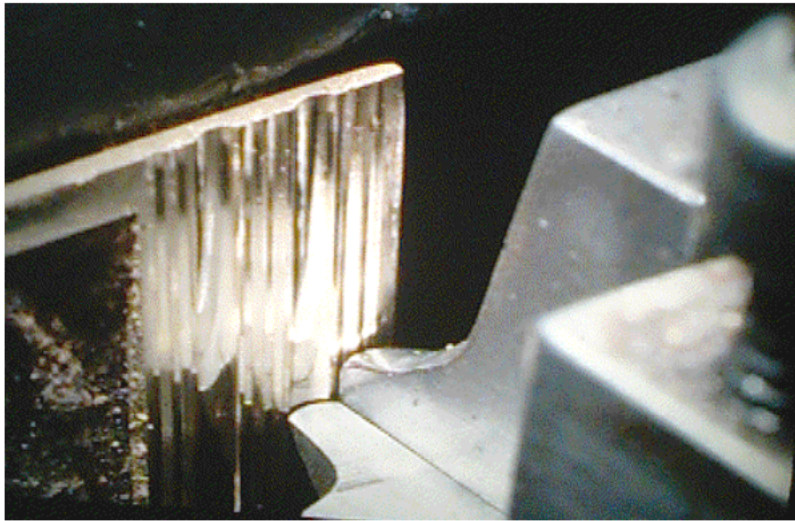


2. ***Cutting Lines: The basis of all engine turning***

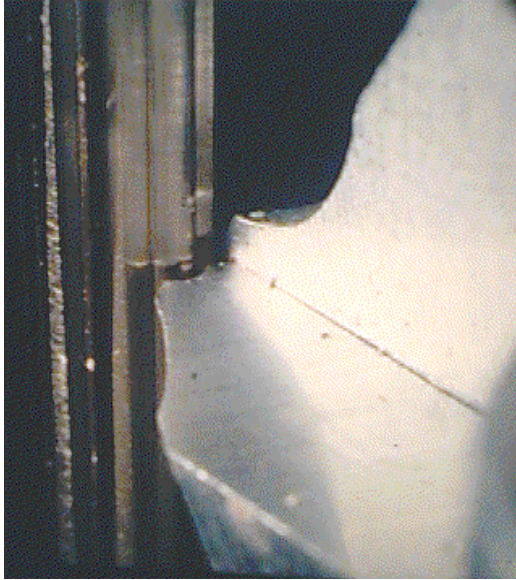
Changing the vertical profile of the tool



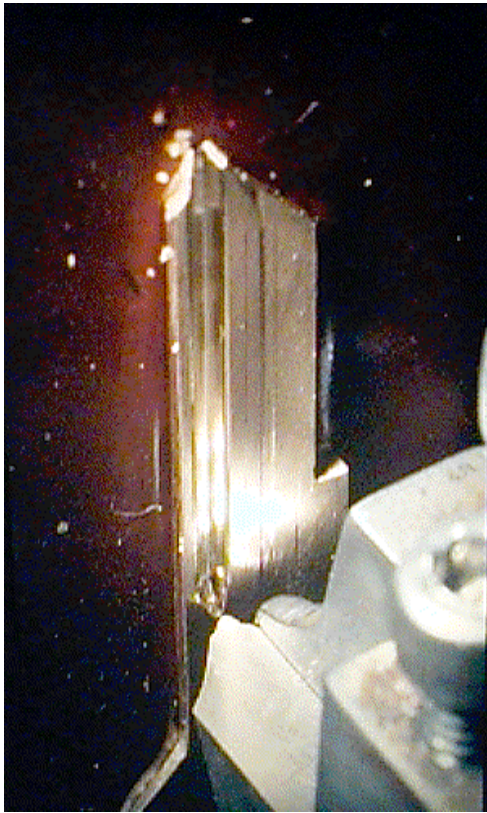
Traditionally, engine turning is done with a shallow vee tool, the vertical profile, as seen from the top, being like the very large example shown, lower, 4th from left, here. But many profiles can be used, as illustrated. Rib tools, Spoon or flute tools and many other shapes are often used.



Cutting the spoon cuts in a reed pattern (two vee cuts, one spoon cut) on a note pad holder. The two different cut profiles, vee and spoon or flute, can be seen where the tool exits on the edge of the workpiece.



Cutting ribs with a rib profiled tool on a 5mm diameter tube



Here a carefully shaped tool is used to cut the blank in 18ct gold for the key to a car